



Orbis Wharf

Bridges Court Road | Battersea | SW11

£2,100 Per month

**MASON
& VALE**
PROPERTY

Orbis Wharf

Bridges Court Road | Battersea

London | SW11

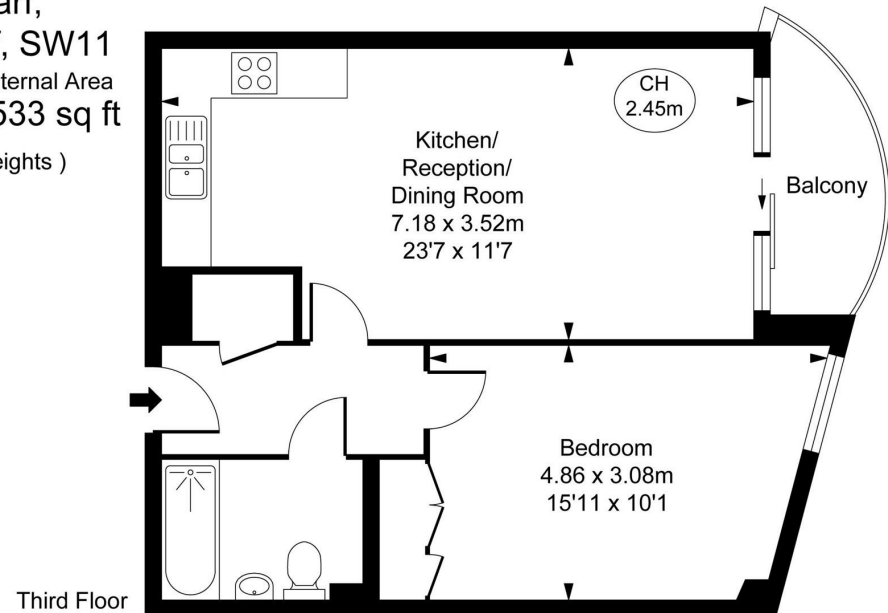
£2,100 Per month

A well presented one bed apartment located in this Riverside development in Battersea. Offering 533 sq ft of accommodation comprising an open-plan kitchen/reception room with floor-to-ceiling windows and door to the private balcony offering views across the communal gardens to the river, bedroom and bathroom,.



- 24 Hour Concierge
- Located on the riverwalk
- Underground parking available via separate negotiation
- Communal Courtyard Gardens
- Private balcony With river views

Orbis Wharf,
Bridges Wharf, SW11
Approximate Gross Internal Area
49.50 sq m / 533 sq ft
(CH = Ceiling Heights)



This plan is not to scale. It is for guidance and not for valuation purposes.
All measurements and areas are approximate only, and have been prepared in accordance with the current edition of the RICS Code of Measuring Practice.
© Fulham Performance

Energy Efficiency Rating		Current	Potential
Very energy efficient - lower running costs			
(92 plus) A			
(81-91) B		82	82
(69-80) C			
(55-68) D			
(39-54) E			
(21-38) F			
(1-20) G			
Not energy efficient - higher running costs			
England & Wales		EU Directive 2002/91/EC	

Council Tax Band D

EPC Rating B

02078560313

hello@masonandvale.co.uk

masonandvale.co.uk